



Building a new
MAINDEE
Together

Maindee Newsletter

Autumn 2021

Maindee Festival New Date: Saturday 25th September – full details inside

Photo by Ian Agland

Welcome to our Autumn 2021 newsletter.

The Maindee Festival was due to happen back in August. Sadly, the whole event was rained off. The good news is that the festival crew have re-scheduled for Saturday the 25th of September. This year, the festival is being held in Jubilee Gardens, just off Corporation Road. Full details on pages 6 and 7.

You will see on the right that we are asking what you think about the 20mph limits. This is one of a number of changes we will see in Maindee in years to come as Governments increase work to reduce climate change.

The newsletter has been delivered by a group of volunteers to over 3000 households across Maindee. Then there are the volunteers who run the library, together with even more who do the Greening Maindee plantings. All our volunteers want to help make a difference in our local community. Do contact us if you think you might like to join the crew, and a big thank you to everyone who's already onboard!



Annual General Meeting

You are warmly invited to the Annual General Meeting of Maindee Unlimited (Registered Charity No. 1160272) to be held in Llyfrgell Maindee Library, 79 Chepstow Road Newport NP19 8BY at 2pm on Saturday October 30th. Coffee and cakes will be served.

The meeting will also be live streamed on the library Facebook page at: www.facebook.com/MaindeeLibrary



Weather permitting, there will be a guided tour of the Triangle as part of the meeting.

If you are interested in standing for election as a Trustee of the charity please contact us by email before 10th October at: admin@maindee.org



20mph Maindee

Have you noticed the 20mph signs around Maindee? Do you think this speed reduction is a good thing or a bad thing? Whatever your views, Welsh Government wants to hear from you now. All the info on how to respond is online at: www.gov.wales/proposal-reduce-speed-limit-20mph-residential-streets. Ask for help at the library if you don't have an online device at home – the volunteers are more than happy to help. But hurry up! All responses have to be in by October 1st – so you will have to get your skates on.

The library is currently open on Mondays (2.30pm to 5pm), Wednesdays (10am to 5pm), Fridays (2.30pm to 4.30pm) and Saturdays (10am to 12pm).

Are You a Maker?

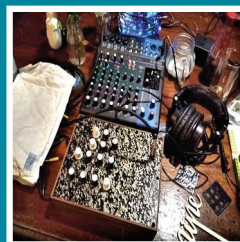
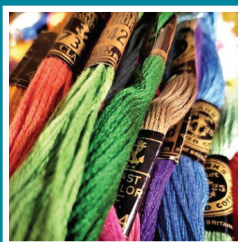
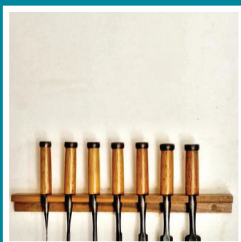
Newport Makerspace is now open on the first floor of the Reuse Centre at 142 Chepstow Road. This permanent makerspace has been set up by a volunteer group of engineers, artists, tinkerers and hobbyists. They are now looking for new members to take advantage of the dedicated wood, metal, craft and tech workshops.

Over £80,000 has been invested to develop and kit out this innovative makerspace. The three main rooms (wood, metal and craft / tech) are equipped with the tools and equipment you will need to create or repair - whether using contemporary technology, traditional hand crafts, craft engineering or woodwork techniques.

Access is great. There is an accessible loo. Although all the workshops are on the first floor, there is level wheelchair access throughout via a new lift. The workshops also feature height adjustable work benches and a portable induction loop.

Members can work on their own projects or join in with others. The idea is for everyone to be part of an active and friendly community in which members learn from each other and are encouraged to share skills and ideas. Everyone must be appropriately trained before using any tools and machines.

If you are interested finding out more you can contact the group and find more info at their website at www.newportmakerspace.org or you could go along to one of their free entry Makers' Nights each Tuesday from 6.30pm to 9pm.



Maindee Shop Talk

Cayzers, the choice of discerning menswear shoppers in Newport for over 100 years, closes this November. With its quality lines and niche market focus, this famous Chepstow Road store has bucked the trend of high street closures. Peter Watkins, whose family has given years of great service to generations of shoppers, is now retiring. It is the end of an era and we wish him well.

Sprinkles Ice Cream Parlour on the corner of Speke Street (check out their strawberry cheesecake ice cream).

By far the biggest store opening to report is the new **Wastesavers' Reuse Centre**. It is housed in the former Jones Brothers/KwikSave/Somerfield/Coop premises at Maindee Square. This huge building had been empty and derelict for almost 10 years when Wastesavers took it on. A "circular economy" grant



The Chepstow Road branch of Lloyds, the last bank left in Maindee, is also closing. There is a free ATM down the road at the Post Office but this will still leave nowhere handy to deposit cash and cheques or get change. A problem for local traders from November no doubt.

It's not all doom and gloom though. Several new retailers have opened in the last year, including the colourful

from Welsh Government was used to bring the building up to scratch.

The ground floor shop is already proving very popular (See: www.facebook.com/WastesaversReuseCentre) and now the lift is back in action and new stairs installed, things are also now starting to happen upstairs (see previous page).

Maindee Festival 2021... Take Two!

Postponed from a rainy Saturday in August, Maindee Festival presents

Maindee Street Party!

Saturday September 25th from 2pm to 5pm

Jubilee Gardens, Rugby Road, Maindee

Bring along your brightest carnival costumes and something noisy to join in the parade at 4.30pm.

There'll be sports and play activities for children and young people, arts and craft stalls where you can make a flag, a mask or a hat to wear in the parade.

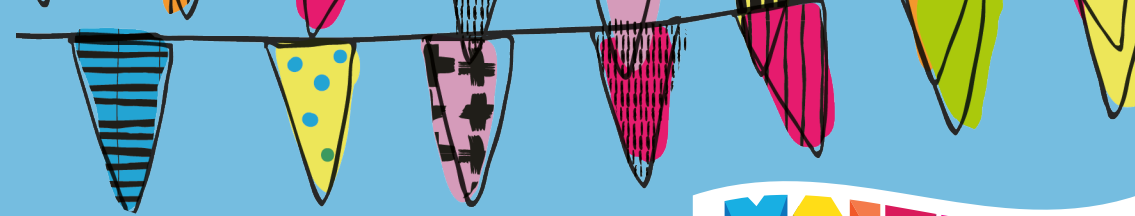
We'll have amazing singing from the Gypsy Stars Choir, and Selena in the Chapel. There'll be Kora music from Diallo, beat boxing from the amazing Kalim, and Velha Bataria will provide some carnival vibe with their Samba performance. See the full line up on the following page.

Look out for Maindee's own Tip and Trash encouraging us to recycle in their very unique way, compelling portraits from Mrs Clarke, and, if you fancy being a giant for an hour or so, there'll be some parade costumes to try on.

The latest Maindee Nonsense will be taking place on festival day so get ready for some pertinent questions posed by Nonsense editor Stuart Farnsworth.

Because Covid hasn't gone away there will be restrictions on numbers. Please be patient with our stewards if you have to wait a few minutes to be allowed in, and help us all to keep as safe as possible.

A big thanks to our volunteers, friends, and funders, including Millennium Stadium Charitable Trust, Newport City Council and Newport Live.



Music on the Mound



Start Time:	Who's On:
2.15pm	Gypsy Stars Choir – Newport's amazing Romany choir with Operasonic.
2.40pm	Aled Hughes – Aled has released four albums which are available online and is a passionate singer songwriter. He performs folk, country and indie acoustic songs in English and Welsh including some traditional songs.
3.05pm	Beat boxing with the talented & innovate Kalim
3.30pm	Pork Chop Musician - vocalist lyricist songwriter and cover artist. Acoustic guitars.
3.55pm	Selena in the Chapel – Newport Singer/ Songwriter. A Poet with a powerful message and a raw talent for turning the words on the page into well-crafted storytelling, which is only heightened by her intricate guitar playing and vocal prowess. For fans of Amy Winehouse, Lily Allen, Kate Nash.
4.20pm	Velha Bataria – South Wales based fantastic Samba Band leading us in the festival parade finale.

25.9.2021 2pm – 5pm Jubilee Gardens

THE GREAT BIG GREEN WEEK

September 18th – 26th is The Great Big Green Week, a national week of events promoting and celebrating action on climate change. (see: www.greatbiggreenweek.com)

Maindee's "Food For Life" project has been busy during the growing season and has plenty to harvest this Autumn. You are invited to come and join Angela and the project's volunteers at this year's Maindee Festival in Jubilee Gardens on Saturday September 25th between 2pm and 5pm to enjoy a taste of all the fruits and vegetables they have been growing. There will be salads, soups, and chutneys, all made from produce grown here in Maindee.

Gwent Wildlife Trust are also hosting a Great Big Green Week stall at the Festival. Come along and learn how to take action to combat climate change here in Maindee. There's lots that we can do. Plant more trees, seeds and bulbs, create hedgehog highway, pollinator paths and frog footways.

The Greening Maindee team will be at the festival. Find out what we're doing, and how **YOU** can join this growing local movement to do our bit to reduce climate change.



Eveswell Community Centre

Sitting on the corner of Eveswell and Archibald Street, the community centre is a much loved local facility. Everyone wants it to continue to serve local need. Discussions are now taking place between the Council and TOCH on possible future plans.

Meanwhile, in the grounds of the centre the Greening Maindee Food for Life team has been completely transforming the outdoor spaces. New raised beds are bursting with fresh veg and flowers. Paths have been created. A rain garden will soon be installed and this colourful mural has just been painted. It is all very impressive.



Street Play

Maindee is very short of green spaces and many homes have small gardens. So this is a problem for parents and children looking for outdoor play space. But what if you could control the traffic and let children play out in the street for a few hours?

This is just what a group of parents and children tried out on Livingstone Place this summer. As part of National Play Day on August 4th, the end of Livingstone Place became an informal playground for a couple of hours. **It was a real success.**

If you'd like to see Street Play happening on your street please contact us at admin@maindee.org or phone us on 07925 436903.

Maindee Unlimited can help you organise and publicise the event, provide simple play equipment and help with other aspects such as occasional street closures, and finding volunteers. Street Play works best in small residential streets.





Work on the Triangle on the corner of Chepstow Road and Livingstone Place is moving forward but the initial target to get everything finished this Summer has been missed due to delays with the building work.

The original 1930s concrete flat roof was in a much worse state than first thought, so there was delay while extra steelwork was ordered and delivered. Then it was discovered that the mains water supply was not just turned off but completely disconnected.

Getting a new supply pipe installed was tricky because of the need to protect tree roots, so a new plan was needed for the water supply and site drainage. This has caused more delay. John Stone, chair of the project board, is now forecasting a November finish for site works.

There is better news on plans to appoint operators for the on-site café. 12 people expressed their interest in running the café and by the time you read this all tenders will have been received. A selection process will follow.

For further info about the Triangle contact Ruth Essex: info@maindee.org



SQUARE KNITTERS

MEET IN THE LIBRARY FROM 10.30 TO 12 EVERY SATURDAY
BEGINNERS + EXPERIENCED KNITTERS WELCOME

LLYFRGELL MAINDEE LIBRARY +, 79 CHEPSTOW ROAD, NEWPORT NP19 8BY

WOODLANDERS

Apple Day

WOODLAND PARK
SATURDAY 9 OCTOBER 12-4
A SEASONAL CELEBRATION OF APPLES IN OUR COMMUNITY

ORCHARD PRUNING ● RAKING
SWEEPING STEPS ● PRESSING AND
JUICING YOUR OWN APPLES

r.waller50@ntlworld.com for more info



About This Newsletter

Maindee Unlimited is an incorporated charity run by local volunteers. The charity was set up in 2015. We are based in the library on Chepstow Road next to the Police Station.

The charity publishes the newsletter three times a year. It is delivered door to door to over 3000 households in the Maindee area by a team of volunteers. Contributions are welcome. They can be dropped into, or posted to the library, or emailed to admin@maidee.org.

Contact us to discuss advertising. Rates are £250: full A5 page; £150: half page; £90 quarter page. Discounted rates available for small local businesses.

© Maindee Unlimited (Charity No. 1160272) | www.maindee.org
79 Chepstow Road, Maindee, Newport, NP19 8BY






A GLOSSY LESBIAN REVOLUTION

AHEAD OF THE CURVE

A FRANKLY SPEAKING FILM



2pm Saturday 9 October 2021
Llyfrgell Maindee Library +

   @CurveMagMovie

#CurveMagMovie

CurveMagMovie.com

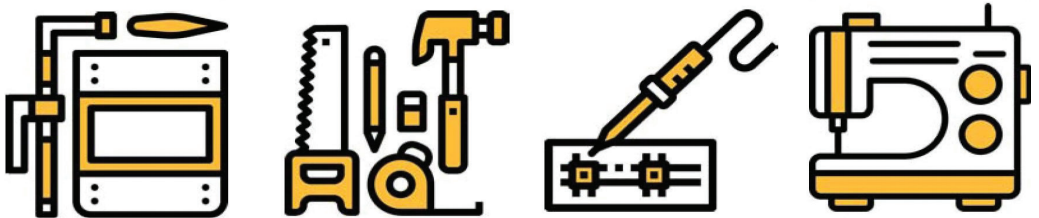
Together Films



Free screening followed by zine workshop. The film explores Franco Stevens' wild ride with Curve, the world's best-selling lesbian magazine. Only 30 tickets available so pre-book at: <https://www.eventbrite.co.uk/> or email info@maindee.org Venue has all level access

LLYFRGELL MAINDEE LIBRARY +, 79 CHEPSTOW ROAD, NEWPORT NP19 8BY

Newport Makerspace



Come along to our regular weekly Makers' Night
Every Tuesday from 6.30pm to 9pm

Admission is free but Places are limited so please visit our website
for details on how to join: <https://newportmakerspace.org/>

Find Newport Makerspace on the 1st floor of Wastesavers Reuse Centre, 138-142 Chepstow Rd, Maindee, Newport, NP19 8EG
Also find us on facebook: facebook.com/groups/newportmakerspace